



KONICA MINOLTA

Font Management Utility

User's Guide

Contents

About this Product	ii
Trademarks and registered trademarks	ii
1	Introduction
1.1	Operating environment 1-1
1.2	Main functions 1-2
2	Installing Font Management Utility
2.1	Installation 2-1
To install	2-1
2.2	Uninstallation 2-1
To uninstall	2-1
3	Using Font Management Utility
3.1	Starting Font Management Utility 3-1
To start	3-1
3.2	Quitting Font Management Utility 3-2
To quit	3-2
3.3	Device Registration 3-2
3.4	Add/Delete Mode 3-3
To add fonts and forms	3-3
To delete fonts and forms	3-7
3.5	Add Fonts/Forms Collectively Mode 3-9
Add Collectively procedure	3-9
3.6	Delete Collectively Mode 3-13
Delete Collectively procedure	3-13
3.7	Font/form list settings file 3-17
Exporting font/form list (In case of Add/Delete Mode)	3-17
Exporting font/form list (In case of Add Collectively Mode)	3-20
3.8	Saving lists as files 3-22
To save a list	3-22

About this Product

Font Management Utility is, as plug-in of Device Set-Up, a utility that allows you to add and delete the fonts and the forms for printing overlays of the supported devices (MFPs) that are on a network.

You can display a list of fonts and forms that were added with Font Management Utility.

Trademarks and registered trademarks

Trademark acknowledgements

KONICA MINOLTA and the KONICA MINOLTA logo are either registered trademarks or trademarks of KONICA MINOLTA, INC.

Microsoft® and Windows® are either registered trademarks or trademarks of Microsoft Corporation in the United States and/or other countries.

All other company and product names are either trademarks or registered trademarks of their respective companies.

Dialog boxes



Note

The dialog boxes that appear in this document may differ from those that appear on your PC, depending on the installed devices, specified settings, and PC that you are using.



Note

Unauthorized reproduction, translation or duplication of this document, whether in its entirety or in part, is strictly prohibited.

The content of this document is subject to change without notice.

Copyright © 2005 KONICA MINOLTA, INC. All rights reserved.

1 Introduction

1.1 Operating environment

The operating environment of Font Management Utility is described below.

Supported operating systems	Windows Vista Enterprise (SP2 or later)* Windows Vista Business (SP2 or later)* Windows Vista Ultimate (SP2 or later)* Windows 7 Enterprise (SP1 or later)* Windows 7 Professional (SP1 or later)* Windows 7 Ultimate (SP1 or later)* Windows 8.1 Pro * Windows 8.1 Enterprise * Windows 10 Pro * Windows 10 Enterprise * Windows 10 Education * * 32-bit(x86) and 64-bit(x64) editions are supported.	
Available hard-disk space	200 MB or more (during installation)	
Supported fonts and forms	PCL fonts	PCL-compliant font data
	PCL forms	PCL-compliant macro data
	PostScript fonts	PostScript type 1 fonts (PFA or PFB)
	PostScript forms	PS or EPS
	OOXML fonts	TrueType font format or OpenType font format
Other	Microsoft .NET Framework: Both of the following versions are required. <ul style="list-style-type: none">• .NET Framework 3.5 (SP1 or later)• .NET Framework 4.5 or later * If you are using Windows 8.1 or Windows 10, install .NET Framework 3.5 separately with the following procedures. <ol style="list-style-type: none">1. Open [Control Panel], and then click [Programs] - [Programs and Features] - [Turn Windows features on or off].2. Select the “.NET Framework 3.5 (includes .NET 2.0 and 3.0)” check box, and click [OK].3. Complete the installation according to the instructions shown.	

Refer to the Readme file for the latest information about the operating environment.

1.2 Main functions

The main functions of Font Management Utility are described below.

- Adds and deletes the fonts and forms of the supported MFP.
- Displays the information of the added fonts and forms in a list.
- Saves font/form settings files
- Saves files (CSV file) of the font and form list.
- Automatically detects the supported MFPs that are on a network.
- Manual connection to the supported MFPs that are on a network.

For details of the following functions, refer to the user's guide of the Device Set-up.

- Search/Registration of the supported device
- Network initial settings
- Import/export of the device list
- Auto protect function
- Function access restriction file settings
- Group settings
- LDAP server access settings
- Display option settings

2 Installing Font Management Utility

2.1 Installation

Install Font Management Utility by following the procedure described below.

To install

- ✓ When the Device Set-up is not installed, the Device Set-up installer is activated. Be sure, first of all, to install the Device Set-up.
- ✓ When the languages shown below are selected in the language selection screen while in the installation, the Font Management Utility is displayed in English.
Chinese (Simplified), Chinese (Traditional), Korean

- 1 Double-click Setup.exe.
- 2 Follow the on-screen instructions to install.

2.2 Uninstallation

Uninstall Font Management Utility by following the procedure described below.

To uninstall

- ✓ Please note that the use of the Font Management Utility becomes unavailable if the Device Set-Up is uninstalled with the Font Management Utility installed. On an occasion like this, reinstall it with the installer of the Font Management Utility to install the Device Set-Up.

- 1 From the **Start** menu, click **Control Panel** to open the Control Panel.
- 2 Double-click **Programs and Features**.
- 3 From the installed programs list, select **KONICAMINOLTA Font Management Utility**, and then click the **Uninstall**.
- 4 When the program deletion confirmation dialog box appears, click the **Yes**.
This starts the uninstallation procedure.

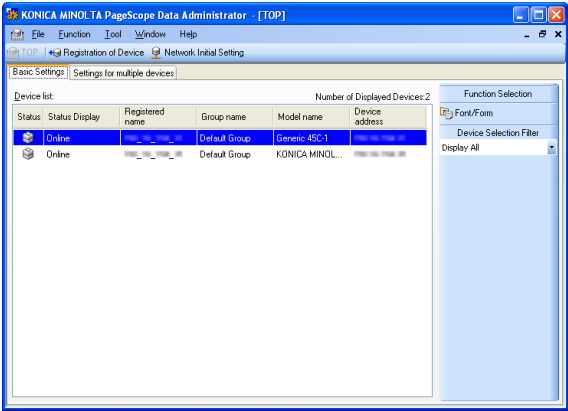
3 Using Font Management Utility

3.1 Starting Font Management Utility

Start Font Management Utility by following the procedure described below.

To start

- 1 From the **Start** menu, click **All Programs—KONICA MINOLTA—Font Management Utility—Font Management Utility**.
 - If a shortcut was created during the installation of Font Management Utility, double-click the shortcut on the desktop.
- The main window appears.



Detail

When activated for the first time, the Application protect settings window is displayed. For details of the method for setting the application protect, refer to “Device Set-up user’s guide.”

Refer to Device Set-Up User’s Guide for more information about main window.

3.2 Quitting Font Management Utility

Quit the Font Management Utility by following the procedure described below.

To quit

- 1 From the **File** menu, click **Exit**.
This quits Font Management Utility.

3.3 Device Registration

When using the Font Management Utility, it is necessary to make a search for a supported device on the network for registration.

As a method for the search/registration of a supported device, the following are available.

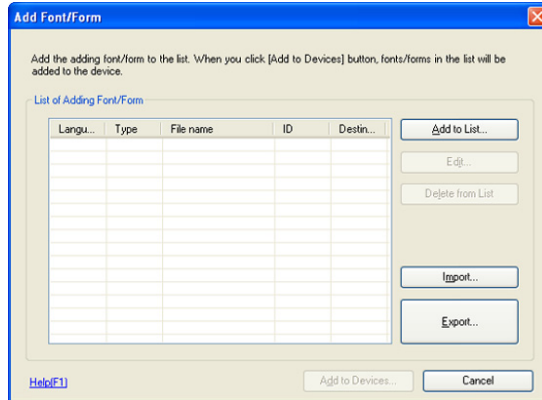
- Method for searching a supported device on the network
- Method for searching a supported device with the IP address specified.
- Method for registering a supported device from the Function access restriction file



Detail

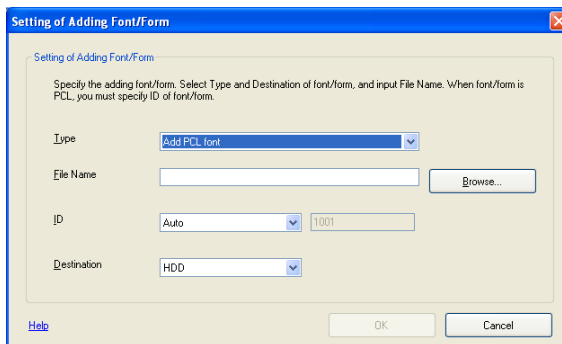
For details of the method for search/registration of the supported device, refer to the user's guide of the Device Set-up.

5 Click [Add to List].



- If adding a font list from a font/form list setting file, click [Import]. For details on font/form list settings files, please refer to “Font/form list settings file” on page 3-17.

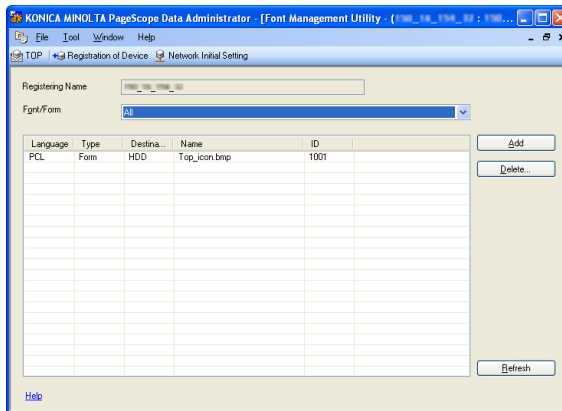
6 Specify each setting, and then click [OK].



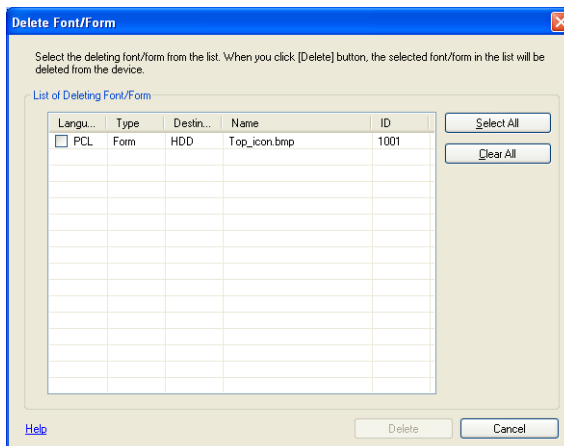
- **Type:**
Selects the type of the font or form to be added.
- **File Name:**
Enters the file name of the font or form to be added. You can also specify the file by clicking [Browse].
- **ID:**
Specifies an ID if the font and form to be added are PCL. Selects [Auto] or [Manual] as the setting.
When the PCL font is used, it is necessary to specify it not with the ID, but with the font No.. Check the Font No. with the PCL Font List output from the panel of the device.

To delete fonts and forms

- 1 Start the Font Management Utility to display main window.
 - For details of the method for displaying the main window, refer to p. 3-1.
- 2 Select the device to delete font/form from the list and click [Font/Form] in Function Selection field.
- 3 Select the fonts and forms to be deleted, and then click [Delete].



- 4 Select the fonts/forms to delete using the check boxes and select [Delete].



3.5 Add Fonts/Forms Collectively Mode

Add Collectively Mode lets a user add fonts/forms to multiple devices.

This section explains the procedures for collective adding of fonts/forms.

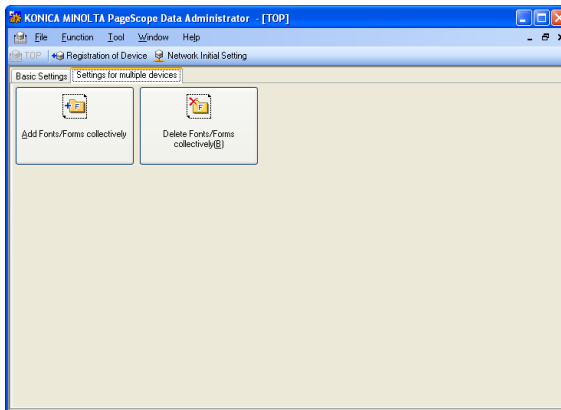


Detail

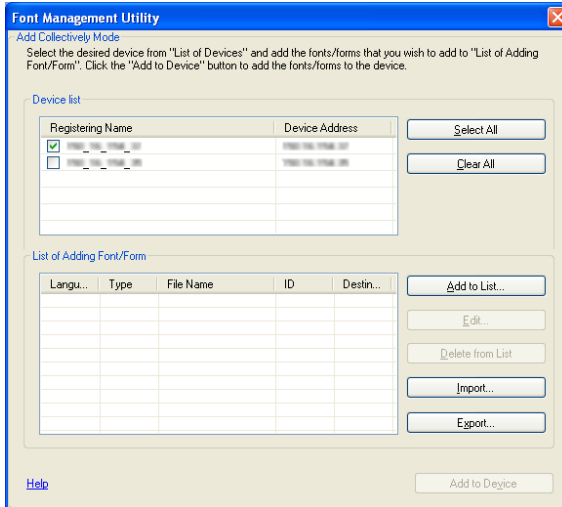
The number of fonts that can be added at a time is limited only to 256 fonts.

Add Collectively procedure

- 1 Start the Font Management Utility to display main window.
 - For details of the method for displaying the main window, refer to p. 3-1.
- 2 Click [Settings for multiple devices] tab and click [Add Fonts/Forms collectively].



3 In the Device list, select the devices to which to add fonts/forms.

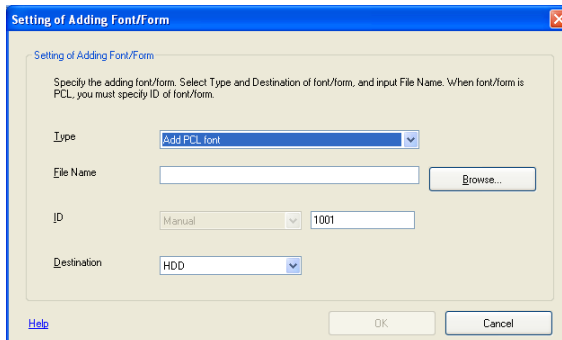


- To select all devices, click [Select All]. This places a check mark in all the check boxes.
- To remove all check marks, click [Clear All].

4 Click [Add to List].

- If adding a font list from a font/form list settings file, click [Import]. For details on font/form list settings files, please refer to "Font/form list settings file" on page 3-17.

5 Configure items, and click [OK].

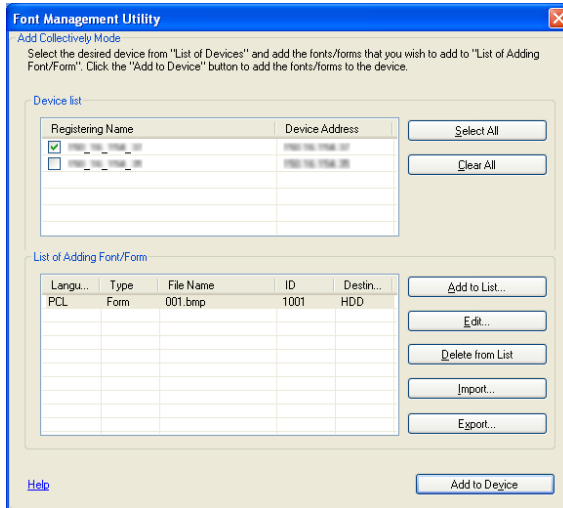


- Type:
Selects the type of font/form to add.

- **File Name:**
Inputs the file name of the font/form to add. You can also specify the file by clicking [Browse].
- **ID:**
While in the Add Collectively Mode, the setting of the ID is fixed in the manual setting.
- **Destination:** Selects [HDD] or [RAM] as the storage destination for the fonts and forms.

The fonts and forms are added to the **Adding Font/Form List**.

6 Click [Add to Devices].



- Clicking [Export] can save font/form setting information in the Adding Font/Form List as a file. For details on font/form list settings files, please refer to "Font/form list settings file" on page 3-17.
- A message prompting to restart is displayed when an OOXML font is added to the device, so restart the device.

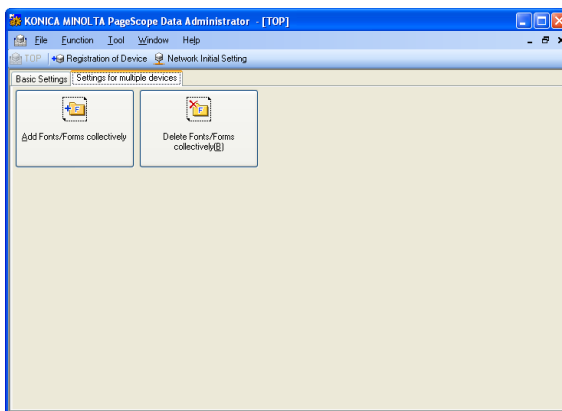
7 When the administrator password screen is displayed, enter the administrator password of the device and then click [OK].

3.6 Delete Collectively Mode

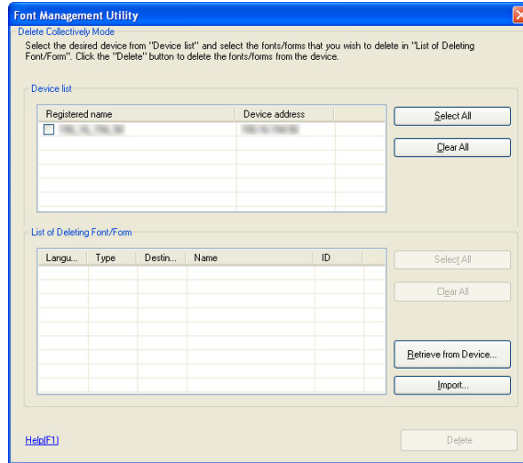
Select Delete Collectively Mode to delete fonts/forms from multiple devices. This section explains the procedures for collective deleting of fonts/forms.

Delete Collectively procedure

- 1 Start the Font Management Utility to display main window.
 - For details of the method for displaying the main window, refer to p. 3-1.
- 2 Click [Settings for multiple devices] tab and click [Delete Fonts/Forms collectively].



- 3 In the **Device list**, select the devices from which to delete fonts/forms.

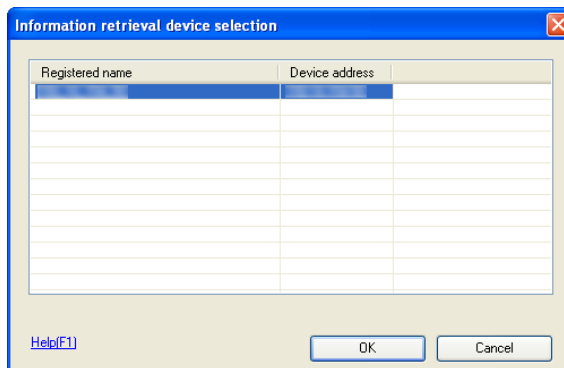


- To select all devices, click [Select All]. This places a check mark in all the check boxes.
- To remove all check marks, click [Clear All].

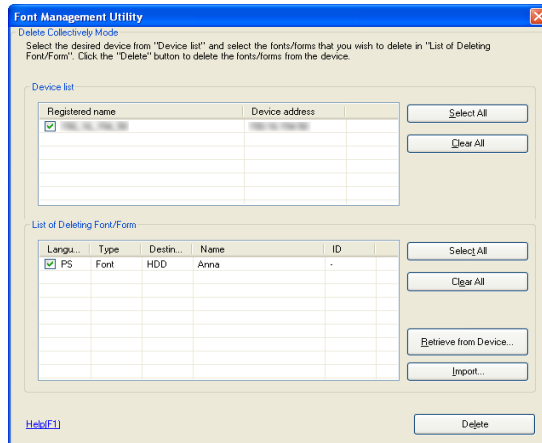
- 4 Click [Retrieve from Device].

- If adding a font list from a font/form list settings file, click [Import]. For details on font/form list settings files, please refer to “Font/form list settings file” on page 3-17.

- 5 Select devices, and click [OK].



- 6 When the administrator password screen is displayed, enter the administrator password of the device and then click [OK].
- 7 In the [List of Deleting Font/Form], select the fonts/forms to delete using the check boxes.



- To select all fonts/forms, click [Select All]. This places a check mark in all the check boxes.
 - To remove all check marks, click [Clear All].
- 8 Click [Delete].
 - A message prompting to restart is displayed when an OOXML font is deleted from the device, so restart the device.

3.7 Font/form list settings file

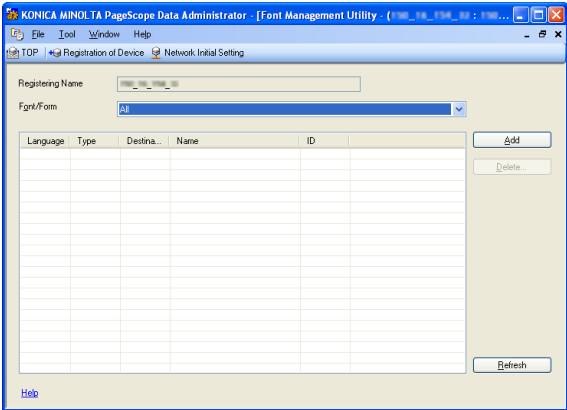
Font/form list settings can be saved as a file (FMD format).

The Font/form list settings file contains basic information about fonts/forms, as well as information regarding locations where font/form files are saved.

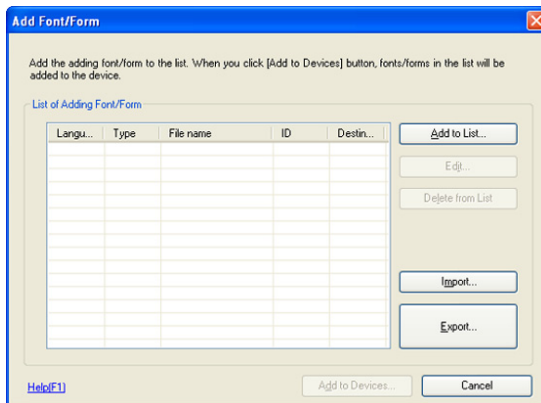
You can collectively import font/form information from a font/form list settings file, reducing repetitive operations.

Exporting font/form list (In case of Add/Delete Mode)

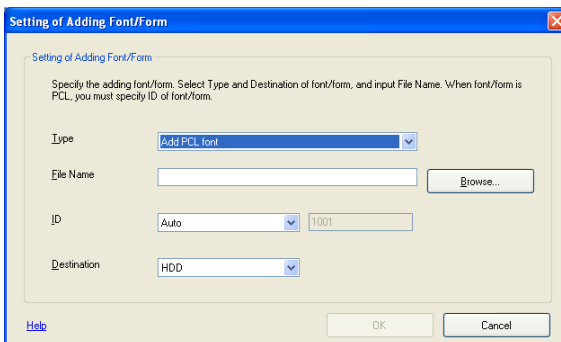
- 1 Start the Font Management Utility to display main window.
 - For details of the method for displaying the main window, refer to p. 3-1.
- 2 Click [Font/Form] in Function Selection field.
- 3 Click [Add].



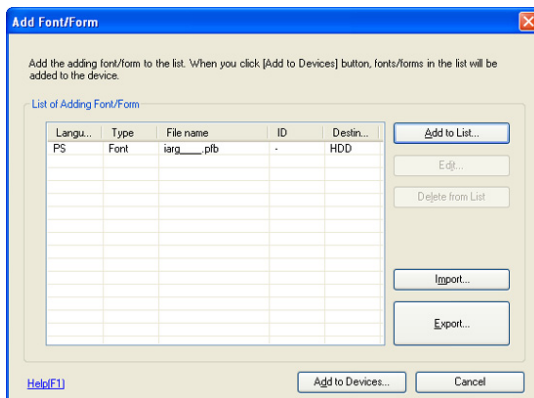
4 Click [Add to List].



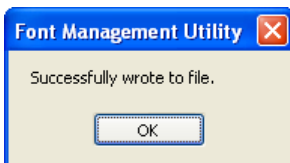
5 Specify each setting, and then click [OK].



6 Click [Export].



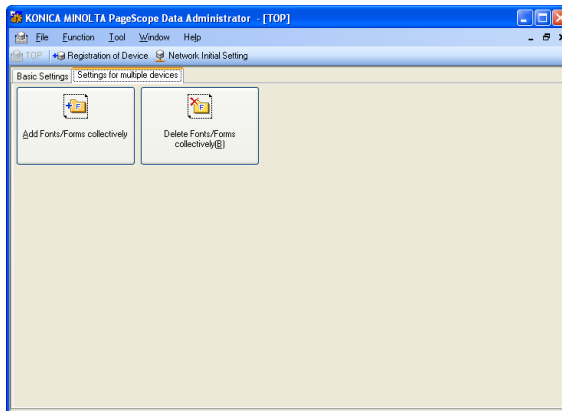
- 7 Specify the location to save and file name, and click [Save].
- 8 Click [OK].



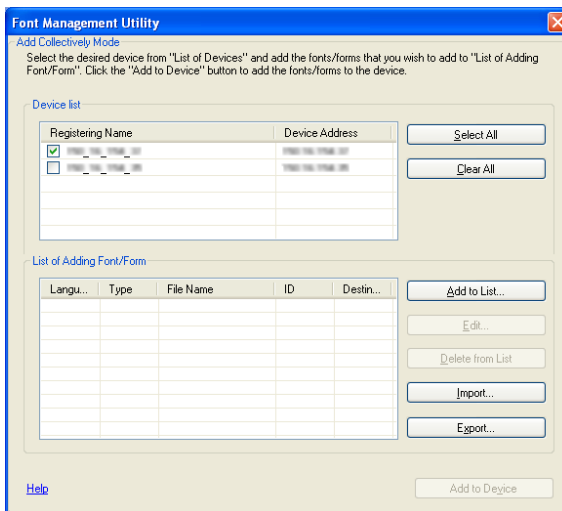
The file is saved in the specified location.

Exporting font/form list (In case of Add Collectively Mode)

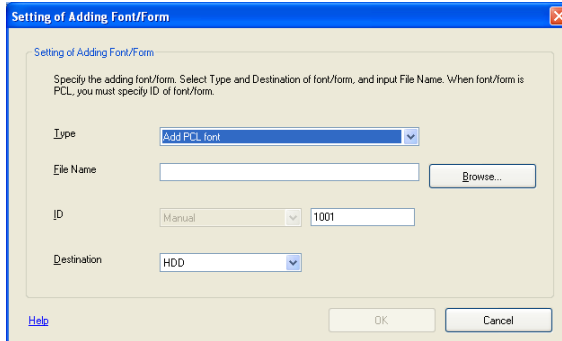
- 1 Start the Font Management Utility to display main window.
 - For details of the method for displaying the main window, refer to p. 3-1.
- 2 Click [Settings for multiple devices] tab and click [Add Fonts/Forms collectively].



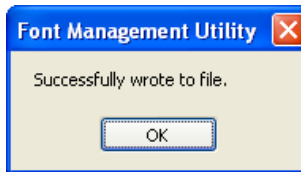
- 3 In the Device list, select the devices to which to add fonts/forms, click [Add to List].



- 4 Configure items, and click [OK].



- 5 Click [Export].
- 6 Specify the location to save and file name, and click [Save].
- 7 Click [OK].



The file is saved in the specified location.

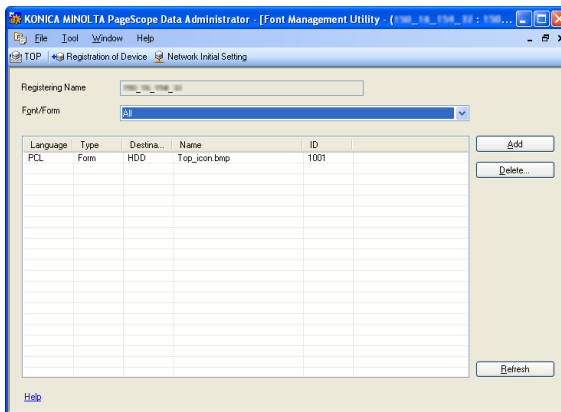
3.8 Saving lists as files

You can save the font and form list as a file (CSV file).

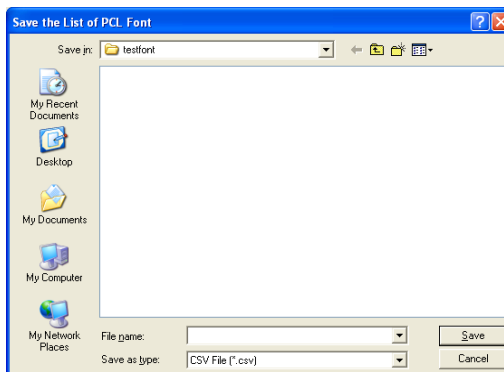
Lists can be saved as files from Add/Delete Mode.

To save a list

- 1 Start the Font Management Utility to display main window.
 - For details of the method for displaying the main window, refer to p. 3-1.
- 2 Click [Font/Form] in Function Selection field.
- 3 Select [Save List] from the [File] menu, and then click the list you want to save.



- 4 Specify the save location and file name, and then click the [Save].



The file is saved in the specified location.



...

Note

The saved CSV file can be viewed and printed by opening it with a spreadsheet program such as Microsoft Excel.



KONICA MINOLTA

<http://konicaminolta.com>